



SUPPLEMENTARY MATERIALS

CCS52A1/2 orchestrate hypocotyl endoreplication and elongation via PKN1/PKN2 pathways in *Arabidopsis thaliana*

Lei Li^{1,2*}  | Tangnur Kaderbek³ 

¹Department of Plant Biotechnology and Bioinformatics, Ghent University, 9052 Ghent, Belgium | ²Key Laboratory of Plant Development and Environmental Adaptation Biology, Ministry of Education, School of Life Sciences, Shandong University, Qingdao, Shandong 266237, China | ³Frontiers Science Center for Molecular Design Breeding (MOE), State Key Laboratory of Maize Bio-breeding, National Maize Improvement Center, Department of Plant Genetics and Breeding, China Agricultural University, Beijing, China

*Correspondence: lilei415@sdu.edu.cn (LL)

Received 10 November 2024 | Revised 26 January 2025 | Accepted 11 February 2025 | Published online 21 February 2025

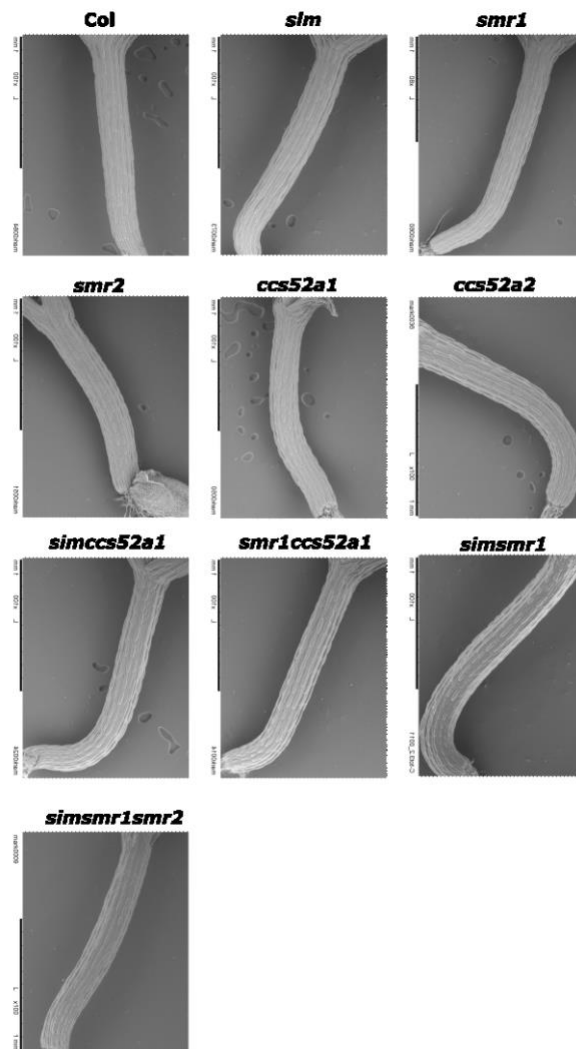


Figure S1. SEM images of light-grown hypocotyl epidermal cells. Representative SEM images of 7-day-old hypocotyls of WT and mutants under light-grown conditions, numbered the epidermal cells from the base (collet) to the top (cotyledon).

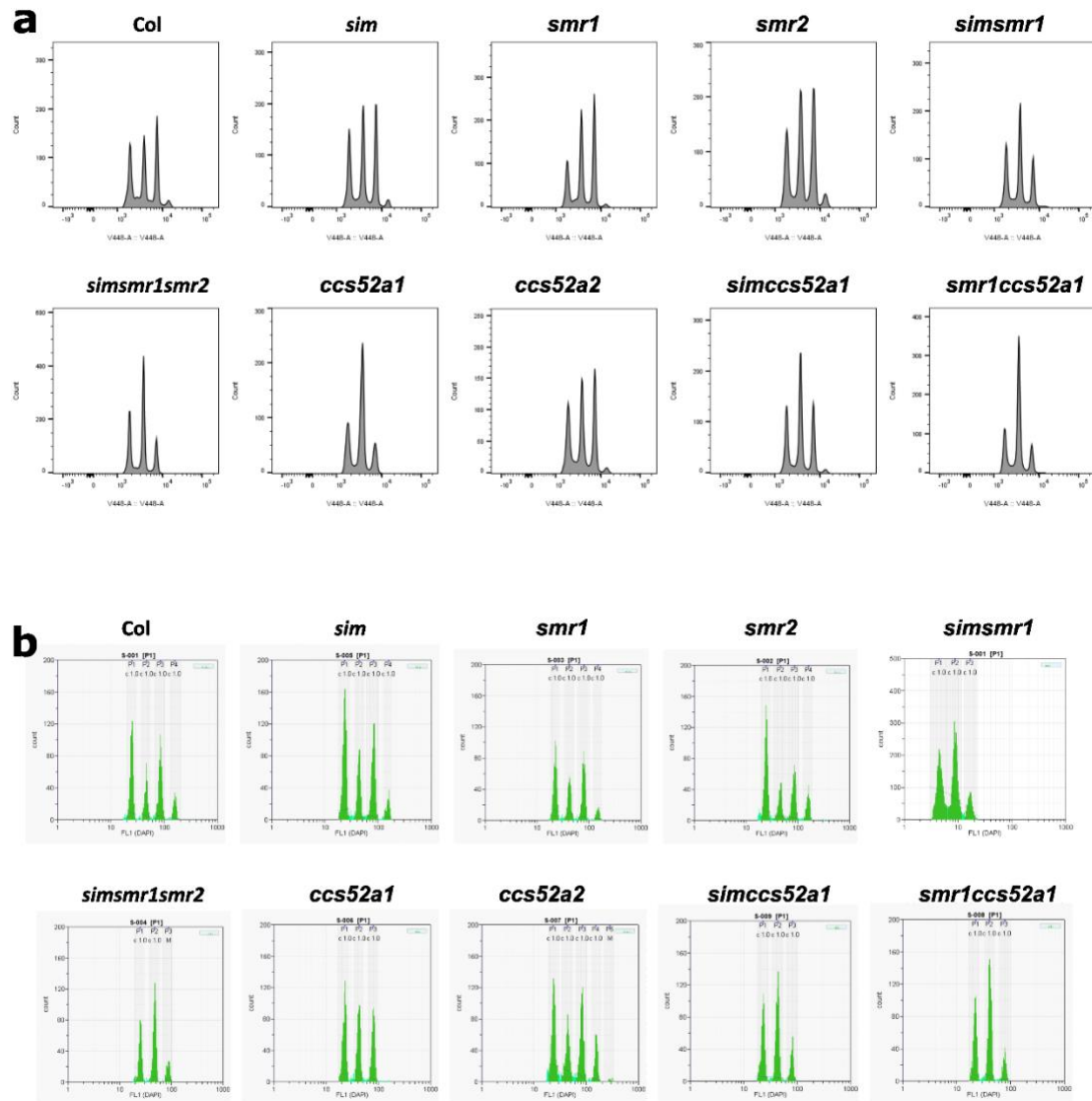


Figure S2. Flow cytometric results from WT and endocycle-related genes mutants' hypocotyls. Ploidy level distribution of 7-day-old hypocotyls of WT and endocycle-related genes mutants (*sim*, *smr1*, *smr2*, *sim smr1*, *sim smr1 smr2*, *ccs52a1*, *ccs52a2*, *sim ccs52a1*, and *smr1 ccs52a1*) under light- (a) and dark (b)-grown conditions. The x-axis represents the DNA content, which was stained by DAPI, and the y-axis represents the counted cells.